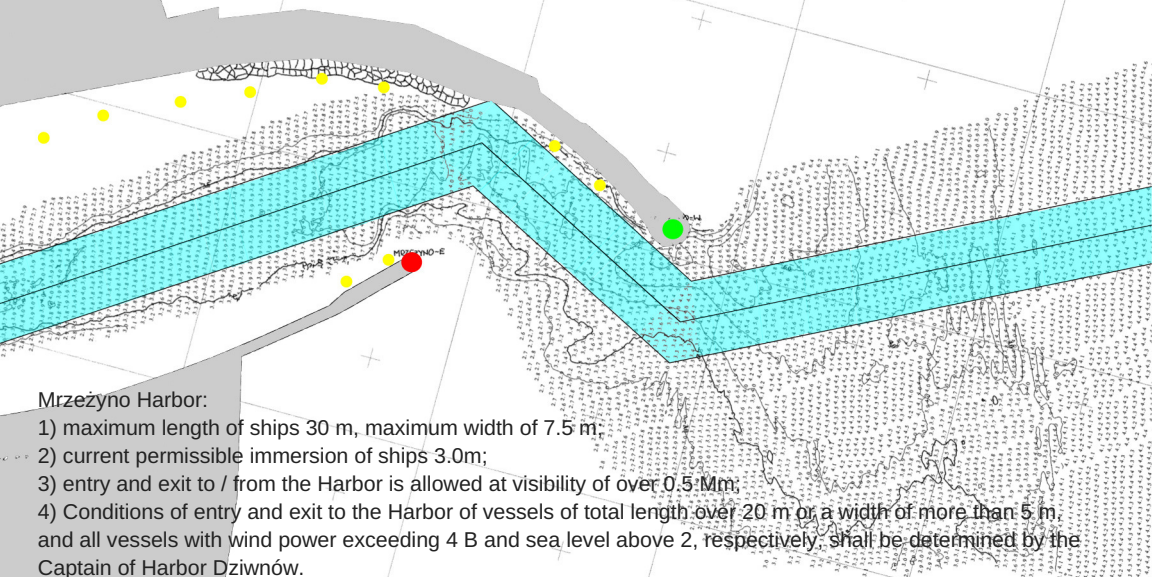


APPROACH PATH TO HARBOR MRZEŻYNO



Mrzeżyno Harbor:

- 1) maximum length of ships 30 m, maximum width of 7.5 m;
- 2) current permissible immersion of ships 3.0m;
- 3) entry and exit to / from the Harbor is allowed at visibility of over 0.5 Mm;
- 4) Conditions of entry and exit to the Harbor of vessels of total length over 20 m or a width of more than 5 m, and all vessels with wind power exceeding 4 B and sea level above 2, respectively, shall be determined by the Captain of Harbor Dziwnów.